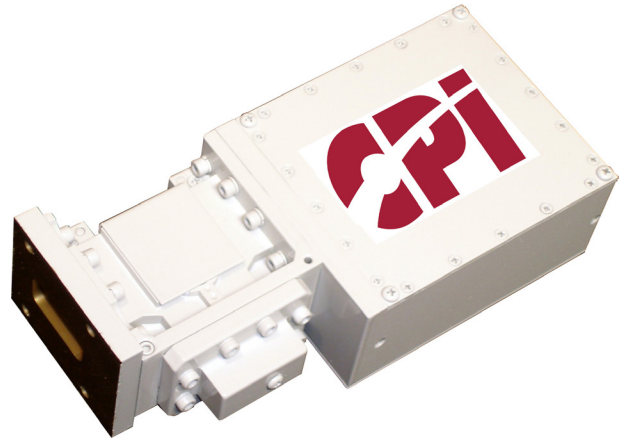


Intended for either indoor or outdoor environments, the CPI L61 X-band low noise amplifier (LNA) provides a combination of superior performance, reliability and cost-effectiveness.



CPI X-band High Performance Low Noise Amplifier, Model L61

FEATURES:

- Outdoor packaging
- Integral fault alarm
- Interstage Tx de-sense filter

Quality Management System - ISO 9001:2015



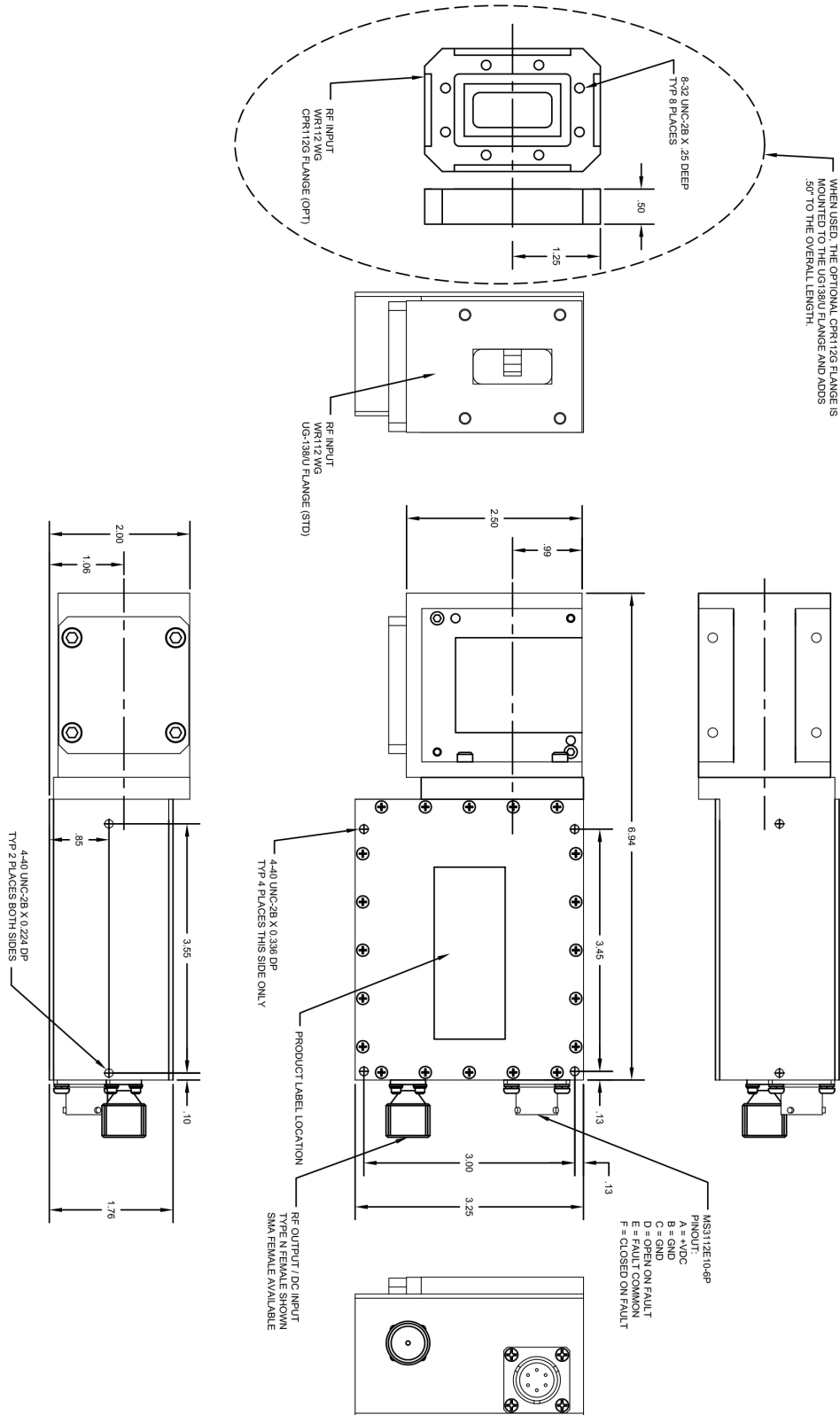
Specifications	CPI X-Band High Performance LNA, Model L61
Frequency	7.25 to 7.75 GHz
Noise Temperature	40 or 45 K max, at +23°C
Gain	50 or 60 dB min.
Gain Flatness	±1.0 dB max, per full band, with Tx reject filter
Gain Slope	±0.2 dB max. over 40 MHz
P1dB	+15 or +20 dBm min.
Input VSWR	1.20:1 typ; 1.25:1 max.
Output VSWR	1.25:1 typ; 1.50:1 max.
Input Overdrive	0 dBm max, non-damaging
Input De-Sense (7.9 to 8.4 GHz)	-25 dBm max, with interstage transmit reject filter included (-30 dBm max. with optional 60 dB gain)
AM/PM Conversion	0.05°/dB max. at -5 dBm output
Group Delay	Linear: 0.03 ns/MHz max. per 40 MHz Parabolic: 0.003 ns/MHz ² max. per 40 MHz Ripple: 0.3 ns pk-pk max. per full band
Prime Power	Input voltage: +12 to +24 VDC Current: 330 mA nom.
Fault Alarm	Contact closure Form C
Outline Drawing	CPI Dwg. 11719 and 11876
Weight	1.9 lbs nom.
Finish	White paint (others optional)
RF Input Connector	All with WR112 waveguide flange: UG-138U, CPR112G, or UDR84
RF Output Connector	Type N or Type SMA female
Power / Alarm	6 pin MS-type connector, mate included
Pressure Test	5 psi
Operating Temperature	-40°C to +70°C - consult CPI for VAC option
Humidity	100% condensing
NOTES	Seal all connectors using appropriate weatherproofing materials. Failure to seal connectors could result in downtime and repair expenses that are not covered by warranty.



SMP Division
Satcom Products
tel: +1 669-275-2744
email: satcommarketing@cpii.com
web: www.cpii.com/satcom

For more detailed information, please refer to the corresponding CPI technical description if one has been published, or contact CPI. Specifications may change without notice as a result of additional data or product refinement. Please contact CPI before using this information for system design.

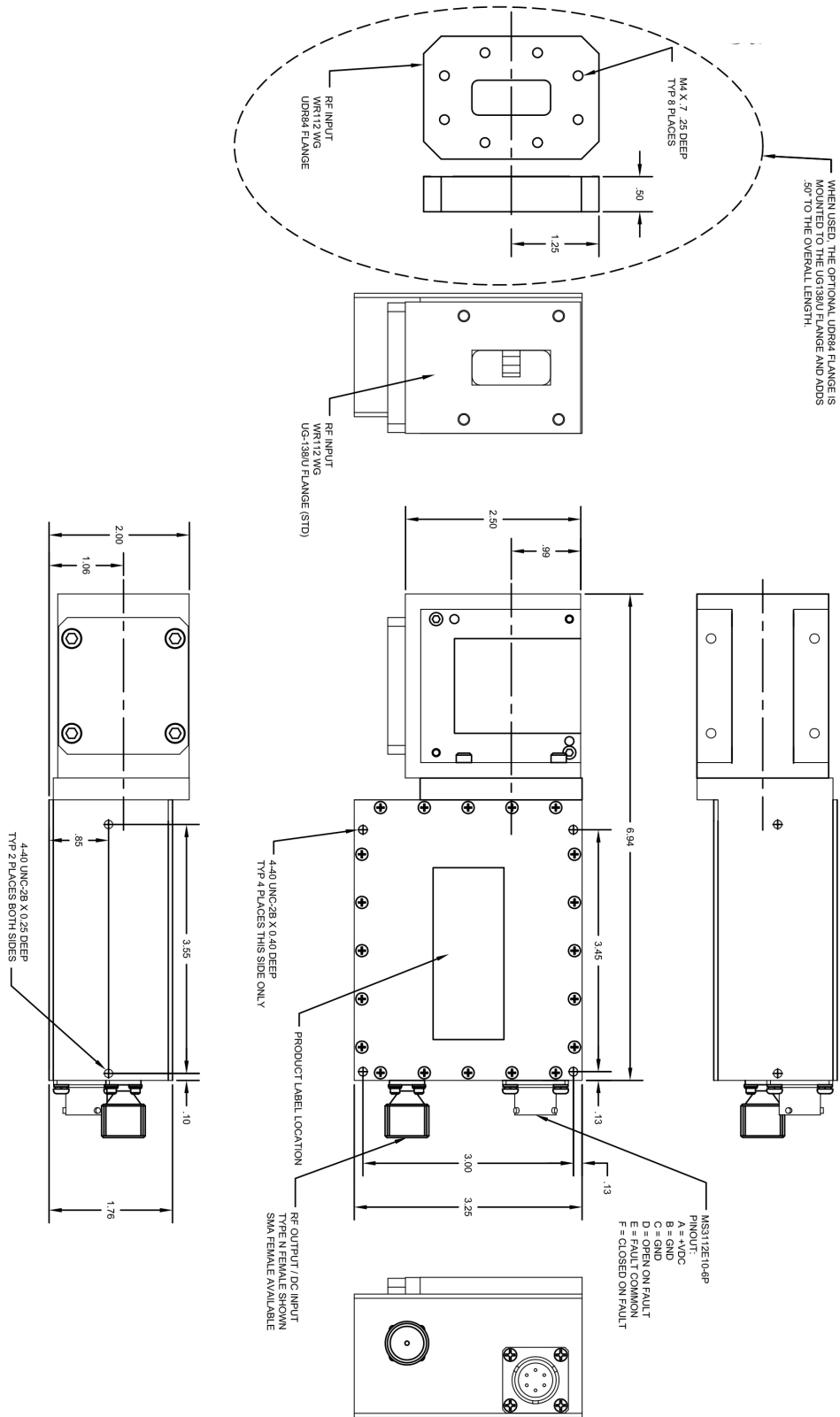
© 2020 Communications & Power Industries LLC. Company proprietary; use and reproduction is strictly prohibited without written authorization from CPI.



SMP Division
 Satcom Products
 tel: +1 669-275-2744
 email: satcommarketing@cpii.com
 web: www.cpii.com/satcom

For more detailed information, please refer to the corresponding CPI technical description if one has been published, or contact CPI. Specifications may change without notice as a result of additional data or product refinement. Please contact CPI before using this information for system design.

© 2020 Communications & Power Industries LLC. Company proprietary; use and reproduction is strictly prohibited without written authorization from CPI.



SMP Division
Satcom Products
 tel: +1 669-275-2744
 email: satcommarketing@cpii.com
 web: www.cpii.com/satcom

For more detailed information, please refer to the corresponding CPI technical description if one has been published, or contact CPI. Specifications may change without notice as a result of additional data or product refinement. Please contact CPI before using this information for system design.

© 2020 Communications & Power Industries LLC. Company proprietary; use and reproduction is strictly prohibited without written authorization from CPI.

Construct Model Number

Base No. 1 2 3 4 5 6 7
 L 6 1 x x x x - x x x - x x

1 Frequency
 0 = 7.25 to 7.75 GHz

2 Gain
 5 = 50 dB
 6 = 60 dB

3 P1dB
 3 = 15 dBm
 5 = 20 dBm

4 Power
 D = 12 - 24 V DC *1
 A = 110/220 VAC

5 Noise Temp
 040 K
 045 K

6 Input Type
 0 = UG-138/U Flange
 1 = CPR112 Flange *2
 3 = UDR84 Flange

7 Output Type
 S = SMA *1
 N = N-Type, (F) *1
 2 = Ethernet

A Accessories
 0 = None
 1 = 6 pin mate
 2 = 6 pin pigtail (DC only)
 3 = 6 pin pigtail (AC only)

B Finish Color (FED-STD)
 0 = White (37925)
 1 = Dark Green (34094)
 2 = Desert Tan (33446)
 3 = Beige (37722)
 4 = Sand (33303)
 5 = Forest Green (34083)
 6 = Metalast

Notes:

*1 LNAs ordered as components of a redundancy system required DC power and an N-Type (F) output connector

*2 CPR112G flange includes a gasket.

Areas shaded in gray - contact CPI



SMP Division
Satcom Products
 tel: +1 669-275-2744
 email: satcommarketing@cpii.com
 web: www.cpii.com/satcom

For more detailed information, please refer to the corresponding CPI technical description if one has been published, or contact CPI. Specifications may change without notice as a result of additional data or product refinement. Please contact CPI before using this information for system design.

© 2020 Communications & Power Industries LLC. Company proprietary: use and reproduction is strictly prohibited without written authorization from CPI.